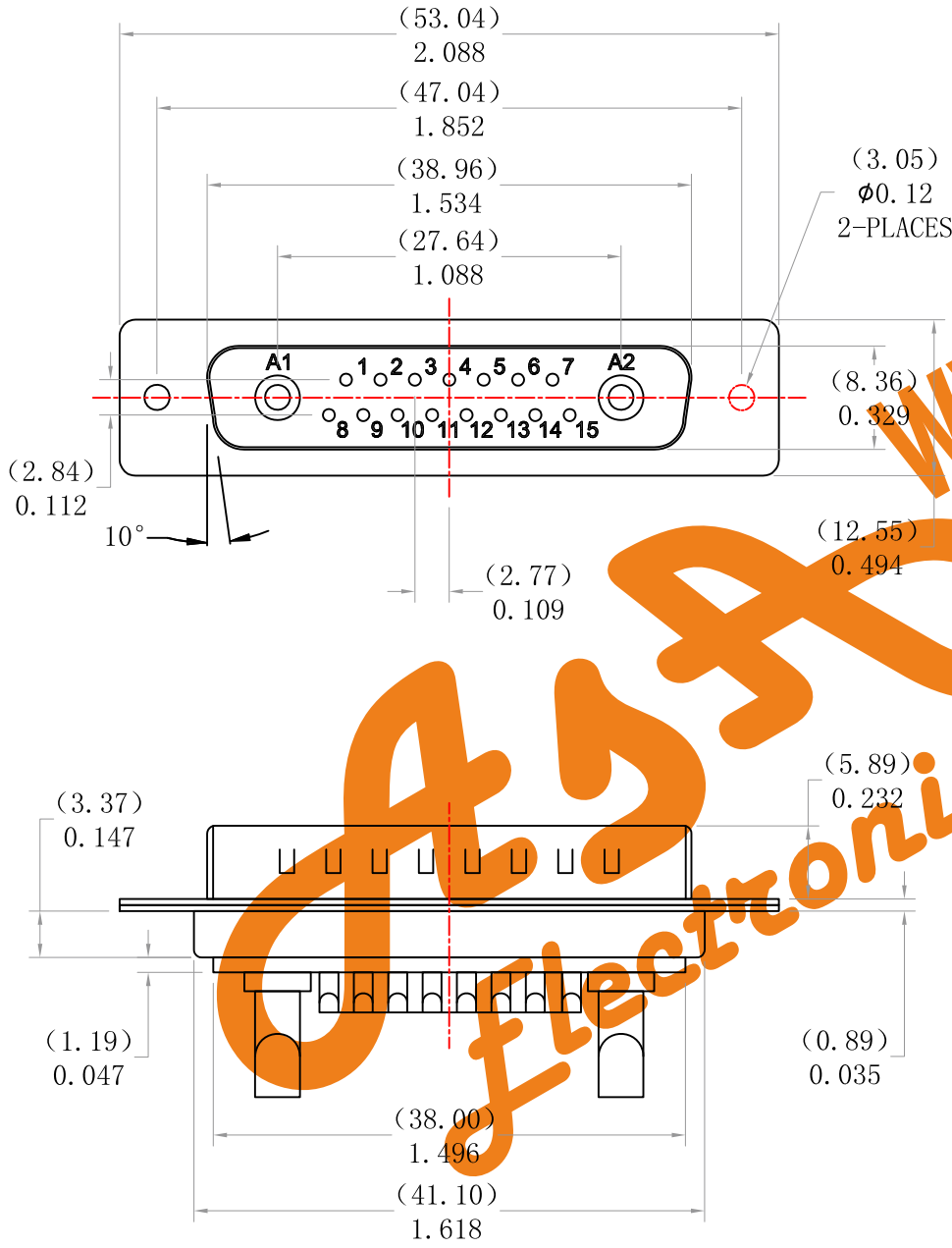
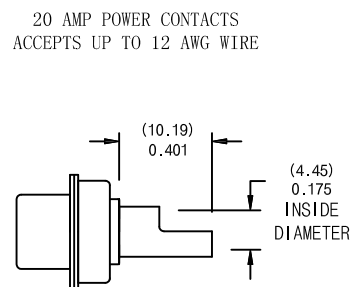
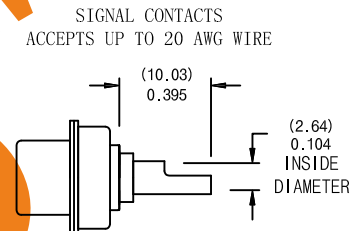
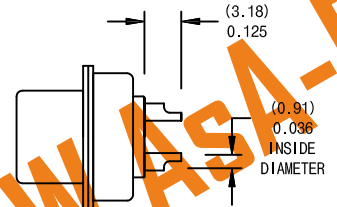


# POWER D-SUB 17W2 SOLDER CUP-MALE

**ROHS COMPLIANT**



NOTE:  
SIGNAL AND POWER CONTACTS  
COME PRE-LOADED INTO INSULATORS



## SPECIFICATIONS:

**ELECTRICAL:**  
 INSULATOR RESISTANCE: 5,000 MegOHMS Min.  
 DIELECTRIC WITHSTANDING: 1,000 VAC r.m.s.  
 OPERATING TEMPERATURE: -55°C ~ +125°C  
 CONTACT RESISTANCE: 30 MILLIOHMS Max.  
 POWER PINS: SEE PART No. BELOW  
 SIGNAL PINS: 3AMPS

**MECHANICAL:**  
 CONTACT INSERTION FORCE: 4.5kg Max  
 CONTACT SEPARATOR FORCE: 0.3kg Min  
**MATERIALS:**  
 CONTACTS: BRASS  
 INSULATOR: PBT UL94V-0 RATED,  
 230°C PROCESS TEMP.

**SHELL:** STEEL  
**FINISH:** NICKEL  
**SHELL:** NICKEL

Ordering Code:

PDB17W2	-M	-G0	-B	-20	-00
①	②	③	④	⑤	⑥

- ① Series
- ② Contact Type:  
M:Male F:Female
- ③ Contact NO. :  
G0: Gold flash G1: 3u" Gold  
G2: 5u" Gold G3: 10u" Gold  
G4: 15u" Gold G5: 30u" Gold
- ④ Insulation Color Code:  
B:Black L:Blue  
W:White
- ⑤ Power AMP:  
10 = 10AMPS; 20 = 20AMPS;  
30 = 30AMPS; 40 = 40AMPS;
- ⑥ Series no

Unless Otherwise specified tolerance  
 X±0.35  
 X.X±0.25  
 X.XX±0.20  
 X.XXX±0.15



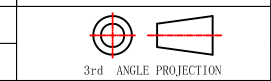
SCALE: 1:1 UNIT: IN (mm)

AsA Electronic Co.  
 Tel : (+98) 21 66 73 56 82 Mob : (+98) 912 03 161 02

DRAWN: junfon H  
 CHECKED: YANG

TITLE:  
 POWER D-SUB 17W2 SOLDER CUP-MALE

12/5/3  
 DATE



DRAWING NO: PDB17W2-MXXXXX00  
 PRODUCT NO: PDB17W2-MXXXXX00